



**HYDRAULIC SYSTEM
PRODUCTS LIMITED**

Manufacturing in the
UK since 1972

Inline BSP Insert Check Valves



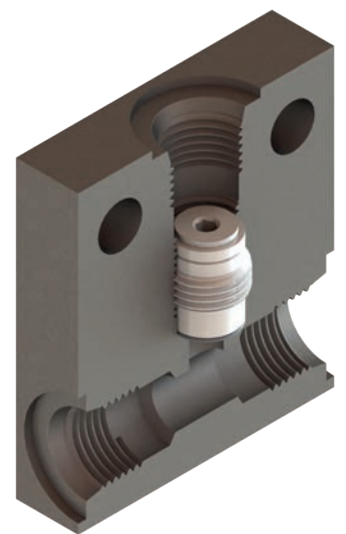
- Working pressure up to 350 bar
- Working temperature range of -28°C to 100°C
- Cracking pressure options 0.50 and 2.50 bar
- Zinc plated steel body
- Stainless Steel options available
- Compatible with industry standard housings
- Saves space in your system

HSP600-I-02 1/4" BSP

HSP600-I-03 3/8" BSP

HSP600-I-04 1/2" BSP

HSP600-I-06 3/4" BSP



**Contact us to discuss your valve requirements.
Industry Standard Housings available for this range.**